

## Application Engineering & Panel Assembly

### Product Overview

Global Control Solutions provides complete application engineering services and panel assembly for the convenience of dealers and installation contractors. The custom panels are completely programmed and tested at the factory to facilitate easy installation and start-up.

A complete point list is generated and approved by the local dealer or owner. Once completed, detailed installation drawings are developed showing internal panel wiring and field wiring to devices and equipment. Cable routing details provide information for planning and procuring the proper labor required for a complete installation.

All panels are completely assembled and tested, including all network devices, controllers, power supplies, transformers, relays and other panel devices required as per the design drawings. All panels are covered by a one (1) year product and services warranty.

Programming is completed and installed as required for system operation. All panels are tested for operational integrity at the factory, which allows the system to be installed with a minimum of commissioning on-site, thus reducing costly field labor for panel design, assembly and programming. A complete color graphics interface is provided showing equipment operation, setpoints and other pertinent system data.

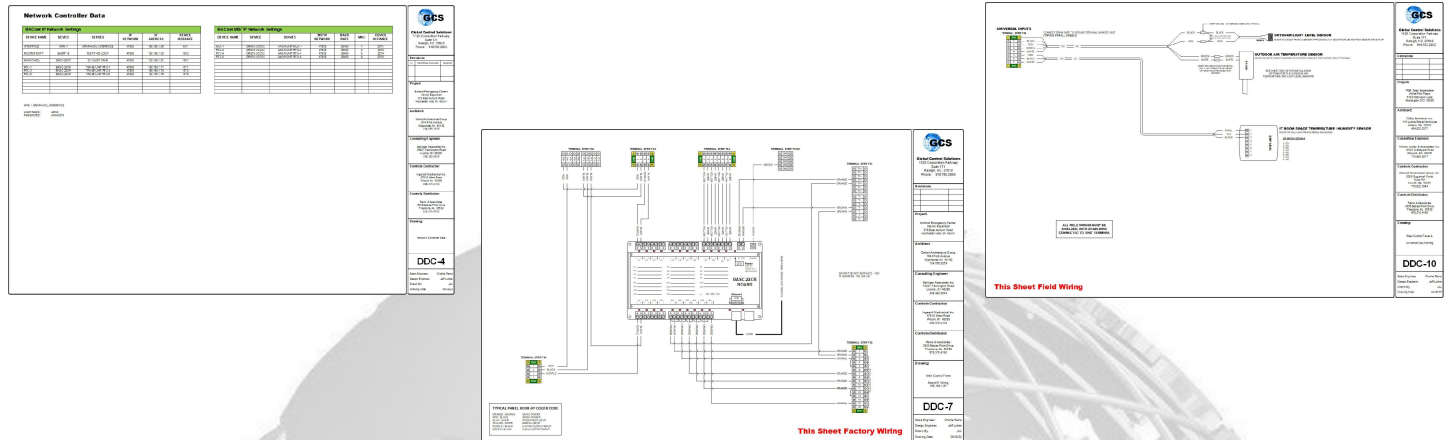


### Features

- Custom panel assemblies.
- Completely wired panels allow field connection to terminal strips.
- Color coded internal wiring for easy circuit identification and field servicing.
- All network devices, controllers, power supplies and panel devices included.
- Application engineering including system design and point listing development.
- Complete panel drawings showing internal wiring connection to terminal strips.
- Field installation drawings indicating details for each field device or equipment connection.
- Cable routing charts for installation planning and labor procurement.
- Panels completely programmed and tested at the factory.
- Factory burn-in insures trouble free installation and start-up.
- One (1) year product and services warranty.
- Color graphics interface.

## Engineering Drawing Details

Drawings are provided in 17" x 11" format standard and PDF copies are provided via email for system verification and approval.



## Interface Details

The interface is a network based gateway which is accessed through a standard web browser. Network devices and interfaces are included with the system, and allows complete programming and interrogation of system operation. A customized color graphics interface is developed, showing specific system operation and allows setpoint modification.



## Panel Details

Typical Panel Sizes:

36" x 24" - 7" Hinge Cover  
 30" x 24" - 7" Hinge Cover  
 24" x 20" - 7" Hinge Cover  
 20" x 16" - 7" Hinge Cover

18" x 18" - 4" Screw Cover  
 18" x 12" - 4" Screw Cover  
 12" x 12" - 4" Screw Cover